

PRODUCT DETAILS

Rcom MARU DELUXE PRO 100

HIGH-PERFORMANCE DIGITAL INCUBATOR
ARTIFICIAL INTELLIGENCE

It has been designed to analyze airflow from computer simulation in order to keep optimal environment inside of incubator and applied high digital technology to control automatic hatching system.



THE TECHNOLOGY CARVING OUT A FUTURE

CREATION OF MOST VALUABLE LIFE BIRTH!

WORLD CLASS PRODUCT OF KOREA **1**



Smart jog-dial system
Innovative design raised durability by applying easy operation jog-dial method



LED indoor light
LED indoor light which can check egg condition



Door sensing function
Internal Micro switch which can prevent temporary temperature rise from door opening and closing



Advanced concept PTC heater humidity unit
Excellent durability and heat efficiency by applying PTC heater and maintenance of safe humidification effect without overheating



New egg turning device
Upgraded egg turning device for stable electricity interception from external electric shock

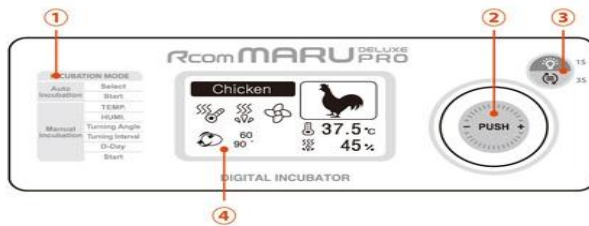


Superb high density foam board
A thick coated sheet for warmth reinforcement and embossing surface treatment to prevent pollution



Name & Function of Operation Parts

Rcom MARU DELUXE PRO 100 / 200



Names and components of each part

- ① **Function Table** : Function can be selected in order by using the jog dial
- ② **Jog Dial** : Press and turn around to left and right
 - Function setting mode will appear when pressed for 3 seconds
 - Temp. and humidity can be checked when pressed for 1 second
- ③ **Room Light Button (1 second) / Forced egg turning button (3 seconds)** - The incubator turns eggs 1 time for artificial incubation.
- ④ **On screen** : Incubation conditions are displayed.

ICON	NAME AND FUNCTION	ICON	NAME AND FUNCTION
	Choose a bird * Chicken ① * Duck ② * Quail ③ * Pheasant ④ * Peacock ⑤ * Goose ⑥ * wildgoose ⑦ * G-Pheasant ⑧ * Turkey ⑨ * Other Birds ⑩		Egg Turning Indication
			Manual Egg Turning Stop Indication
			Automatic Egg Turning Stop Indication
			Incubation Termination
	Species of Birds		FAN Operation Display
	Current Temperature Display / Temperature Abnormal Display		Heater Stop Display / Heater Operation Display
	Current Humidity Display / Humidification function OFF		Humidification Stop Display / Humidification Operation Display
	Egg Turning Interval Indication (minutes) / Egg Turning Angle Indication		Water Supplement / Humidity Abnormal
	Cooling Function Display		Alerting function when the door is open
			Power Failure Notification

Description of optional functions

T.CAL (Temperature Calibration)			Be sure to read CAUTIONS. We do not recommend customers to recalibrate by their own. If you need to recalibrate, please ask purchase place.
H.CAL (Humidity Calibration)			Be sure to read CAUTIONS. We do not recommend customers to recalibrate by their own. If you need to recalibrate, please ask purchase place.
ALARM (Abnormal High Alarm)	High Temp	Alarm sounds when incubator temp. is higher than setting value because of room temp. change or heating system disorder * Setting Range : 0.0°C ~ 5.0°C (Default Setting : 2.0°C)	
ALARM (Abnormal low Alarm)	Low Temp	Alarm sounds when incubator temp. is lower than setting value because of room temp. change or heating system disorder * Setting Range : 0.0°C ~ -5.0°C (Default Setting : -3.0°C)	
Unit		Selecting Centigrade (°C) and Fahrenheit (°F) * Default Value : Centigrade (°C)	
Light		LCD Backlight management setting * Always On : Always BackLight On * Event On : 20 Sec. ON with Key input * Always Off : Always BackLight Off * Default Value : Always On	
Sound		ON/OFF Setting for Melody, other alarms * Default Value : ON	
ALL RESET (Factory setting)		It returns to factory setting when you change the initial setting at discretion.	
Info		Basic information of Incubator (version Indication)	

Identification of Parts

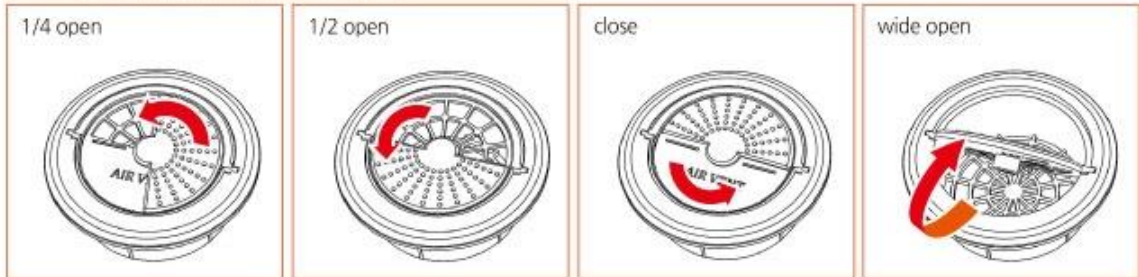
Serial NO is located on the upper front cover. (ex. RCM0000000) is a product specific number.

Rcom MARU DELUXE PRO 100 / 200 (*Below is the image of MAX 200 model.)

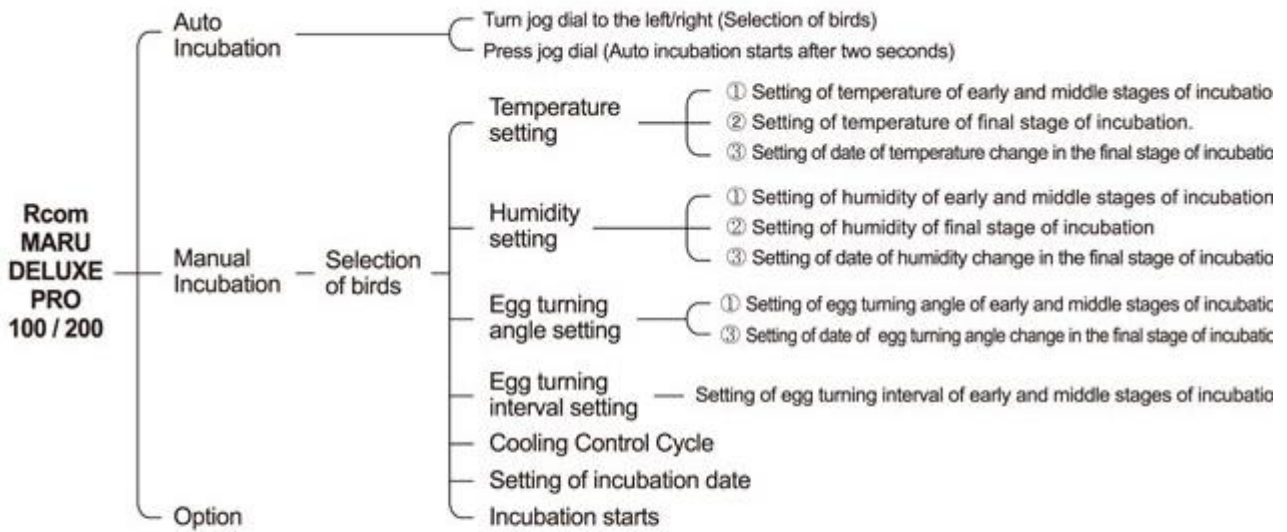


Air Controlling Lever

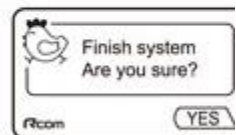
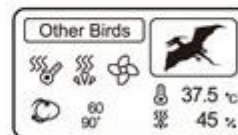
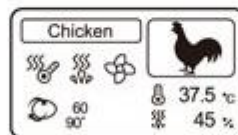
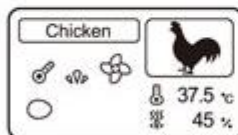
- Outer fresh air can be flowed into incubator inside without affecting insulation. When eggs start hatching, open air controlling lever either fully or half-open.
- If you set high temperature, condensation will occur the near Air Vent and may causes licking water from the incubator and it is not a technical problem.



Incubation Modes



► If you press the jog dial for 3 seconds while on operation, **Finish Incubation / Change Settings / Option** appear on the screen



[INTERIOR]



Cradle egg turning device



Slide type tray



Main controller



Air booster



PTC Humidification unit



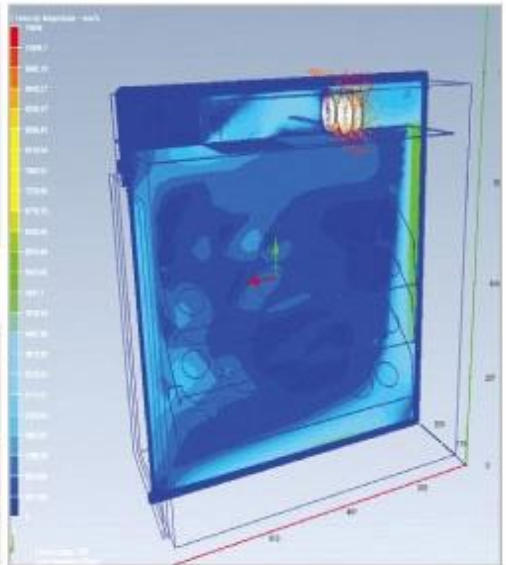
Digital Humi. & Temp. sensor



Water hose connector



Slide type Air-vent



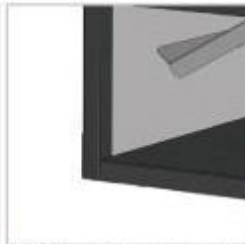
To minimize temp variation inside the incubation Airflow simulation



Duplicated view window



Foam board



200°C heat-treated electrostatic power coating for enhanced corrosion-resistance and durability



Slide tray



Slide plate



POM reinforcement hinge



Tube clamp

Specification

1-1 Name : Rcom MARU DELUXE PRO 100 / 200

1-2 Model : PX-100SD / PX-200SD

NAME	ST Series Model No.	Capacities [Chick egg size]	Egg Turning Method	Egg turning angle [°]	Egg turning Interval [min]	Each-Story Egg Turning ON/OFF	Functional Ranger
100	PX-100SD	96	Slide Type	0,15°,30°,45°... 165°,180°,md	0,10,20...360	○	Temperature: 20~42°C (68~107.6°F) Humidity: 30~70%
200	PX-200SD	192	Slide Type	0,15°,30°,45°... 165°,180°,md	0,10,20...360	○	Temperature: 20~42°C (68~107.6°F) Humidity: 30~70%
NAME	ST Series Model No.	Humidification Device	The number of Trays	Dimensions (WxLxH) [mm]	Weight [Kg]	Maximum electric power [W]	Average electric power [W]
100	PX-100SD	○	2 floors	484*637*414	27	440	70
200	PX-200SD	○	4 floors	484*637*573	35.5	440	70