

## PRODUCT DETAILS

---

# Rcom PRO 50

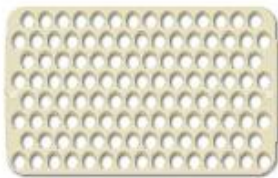
CREATION OF MOST VALUABLE LIFE BIRTH  
EVOLUTION OF DIGITAL INCUBATOR

The Rcom 50 incubator is the first incubator with credibility to have a superior design and function which help in controlling optimum incubation conditions. It has two sensors, one for detecting surrounding environments and the another for internal incubator conditions.



# STRONG FUNCTION!

The Greatest Life Creation With Superb Technique.



Small Egg Tray



Standard Egg Tray



Large Egg Tray

---

Rcom PRO50

Small tray, Standard tray, Large egg tray included

(Universal tray for various, Rolling divider sold separately)



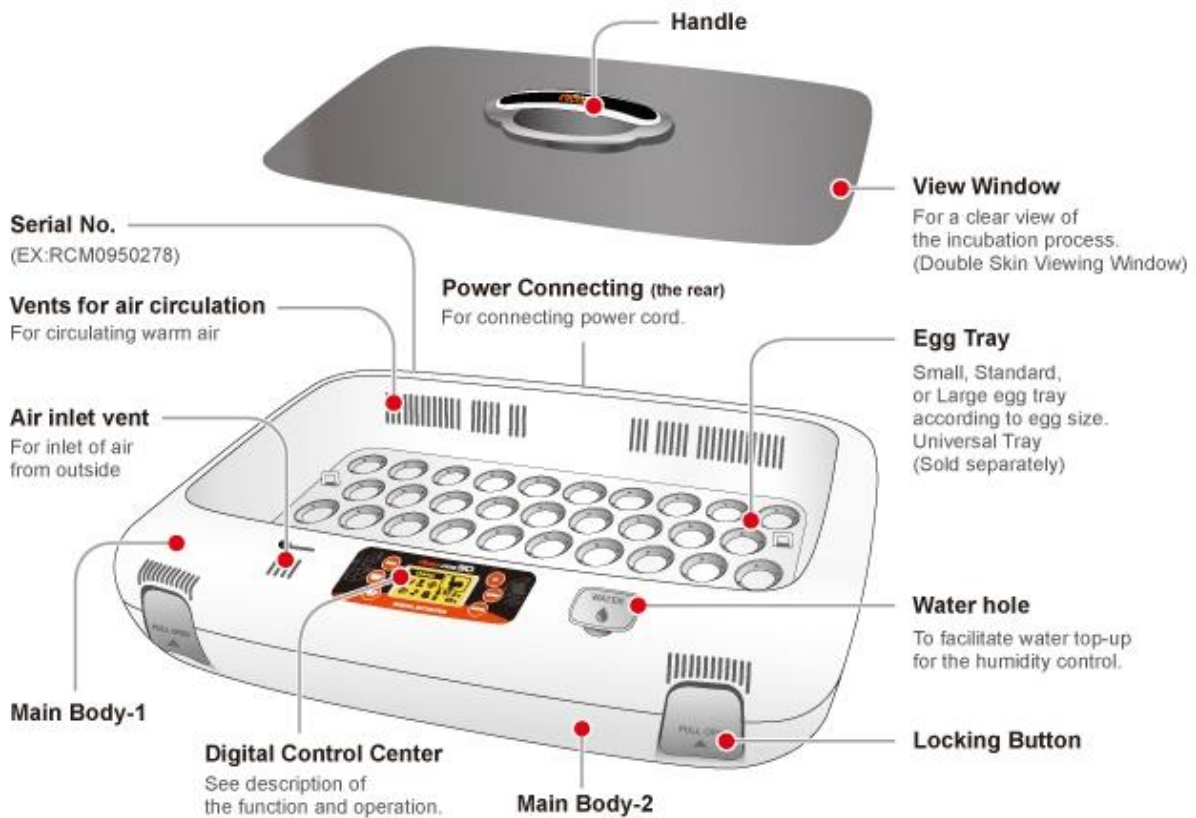
Universal tray(Option)



**Rcom** DIGITAL INCUBATOR is beginning of life affection.



[ IDENTIFICATION OF PARTS ]



## [ FUNCTIONS OF OPERATION ]

**Menu button**  
Select birds incubation termination

**Select button**  
Select auto/manual pass to next stage

**Function button**  
Other function display, return to previous stage



**Up button**  
Temp. & humi. UP  
Setting value change

**Down button**  
Temp. & humi. DOWN  
Setting value change

**Input button**  
Save input and pass to next  
Stage setting value check  
Egg-turning test



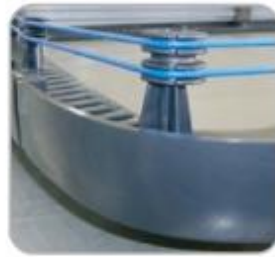
## [ SPECIAL FEATURES ]



4Circulation fan & turning motor



Digital Temp. & Humidity sensor



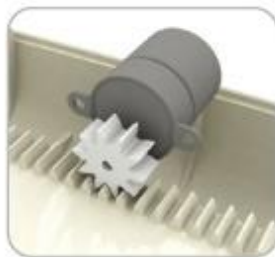
Heating system



Humidity unit



Sensor for Incubation room condition



Egg-turning device



Adjustable air vent



USB Cable Connecting Socket



H-Frame part on body



Heater part & H-frame



Water supplyment for humidification



Duplicated view window



Body & Bottom



LCD display



USB CD (UX-50)



Locking lever

[ RCOM 50 SERIES Function Comparison]

Functions	RcomMax50	RcomPro50	RcomPro50(USB)
Automatic Mode(Artificial Intelligence)	X	O	O
Manual Mode	O	O	O
Temperature Adjustment Extent	20°C~42°C	20°C~42°C	20°C~42°C
Humidity Adjustment Extent	20%~70%	30%~70%	30%~70%
Egg-Turning Angle Adjustment Extent	available extent	15 Degree C ~ available extent	15 Degree C ~ available extent
Egg-Turning Interval Adjustment Extent	60min.	10min. ~ 360min.	10min. ~ 360min.
Operation Indicating Part	FND	LCD	LCD
Egg Tray	Standard	Small, Standard, Large	Small, Standard, Large
Improper operation warning Alarm	O	O	O
Universal Tray	Standard	option	option
Main Body Locking Device	O	O	O
Humidity Controlling Device	O	O	O
BLDC Air Circulation Fan	O	O	O
Duplicated View Window	O	O	O
Egg-Turning Device	Slide	Slide	Slide
Water level Controlling	Automatic	Automatic	Automatic
Air Vent	O	O	O
Egg-Turning Interval RANDOM	X	O	O
Egg-Turning Angle RANDOM	X	O	O
PC Connecting Mode	X	X	O
Density Loss Management	X	X	O
Weight Loss Management	X	X	O
PC Program Management	X	X	O
DataBase Management	X	X	O
Incubator Firmware Upgrade	X	X	O
Incubation Condition Real-time Graph Indicating	X	X	O
Controlling Method	Micro Process	Micro Process	Micro Process
Hatching Date D-Day Count	X	O	O
Seleting the species of birds	X	O	O
Alarm for water supplement ( For Humidification)	O	O	O
Self-examination for sensing abnormal	X	O	O
Maintain Setting Value When Power is out	O	O	O

#### [AUTOMATIC MODE]

\* This mode offers you the easiest way of incubation conditions. Users do not need to control or monitor the incubator except to add water.

#### [MANUAL MODE]

\* This mode is used when users are familiar with incubation, or when they want to hatch some birds which are not indicated on the incubator. User can set the temperature, humidity, and egg-turning.

#### [MAIN FUNCTIONS]

- \* LCD display with incubation information, and animation graphic design
- \* Micro chip with optimum incubation conditions according to the species of birds, for incubation beginners
- \* Manual setting Mode for incubation specialists
- \* Outer Temp. Sensor included for Automatic Adjustment of Heating rate responding to Incubation Room Temperature
- \* Superior design with convenient operation
- \* Optimum air circulation technique with 5 strong BLDC fans
- \* Automatic Temp. & Humidity setting and control
- \* 48 eggs capacity for chicken size eggs (116 Quail egg size / 24 Goose egg size)
- \* Antiblastic Humidification method by heating water, which discourages bacterial growth
- \* Double-glazed view window for minimizing the influence of outside temperature
- \* Enhanced reliability by applying Swiss's Sensirion's 3rd generation temperature & humidity sensor

#### [EASY FUNCTIONS]

- \* No need of separate humidification unit as it is included in main body
- \* °C or °F convertible
- \* Various kinds of egg trays accept various sized eggs with ease
- \* Slide plate with embossed feature for preventing skid
- \* Bottom body designed for easy cleaning
- \* Body locking device

#### [SAFETY FUNCTIONS]

- \* Strong SMPS application for stable power supply
- \* Alarm when water need replenishing
- \* Humidification unit durability improved by water proof BLDC fan
- \* Safety cover applied for protecting humidification unit
- \* Heater supporter designed for heater tension control and its safety
- \* Self-examination function for sensing abnormal conditions
- \* Air Circulation fan cover for safety and electric safety cut-out switch on the upper main body for safety
- \* Incubation data memory function and power outage notification function in case of power failure
- \* Alarm and display function for abnormal incubator temperature caused by sudden fluctuation of ambient temperature

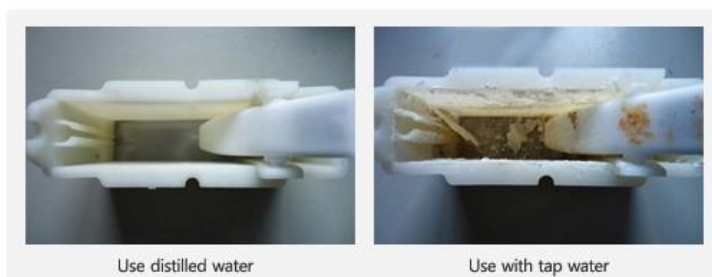
#### \* CAUTION \*

We recommend use distilled water not forming scale in the water tank.

If you want to use other one, please contact to purchase shop.

After hatching, please clean it up, other wise scale can be formed in the water tank and

it can cause failure of machine, in this case, we do not provide free of charge warranty service but charge it.



- Above picture shows after test on brooder and every other incubators show same.



After hatching, please put chicks in to Brooder immediately.

If you leave new born chicks in incubator, the incubator can be contaminated and affect adversely for nest hatching.

Power		AC 100 ~ 120[V] / 220 ~ 240[V], 50/60[Hz]
Power Consumption		Max. 120[W] (Average 65 [W])
Temp. Limits	Automatic	Automatic setting for each birds (manual control available)
	Manual	20 ~ 42[°C] / 68 ~ 107.6[°F]
	PROG (USB)	Normal temperature ~ 42[°C] / Max.113[°F]
Humid. Limits	Automatic	Automatic setting for each birds (manual control available)
	Manual	30 ~ 70[%] (It can be changed according to the conditions)
	PROG (USB)	30 ~ 70[%] (It can be changed according to the conditions)
Egg-Turning Interval		0 ~ 360[°] (Depend on the egg trays)
Capacity		Small - Small egg tray - 116 [eggs] (Quail egg size) / (Included)
		Standard - Standard egg tray - 48 [eggs] (Chick egg size) / (Included)
		Large - Large egg tray - 24 [eggs] (Goose egg size) / (Included)
		Universal tray + ABS Divider - Different from the species of egg / (Sold Separately)
PC Connecting (USB MODEL)	USB 2.0	- Real - time incubation condition transmission and setting control - Incubator Upgrade
Weight		8[Kg] (N.W.) 10[Kg] (G.W.)
Size		(W)633 × (L)522 × (H)171[mm]
Fuse Standard		250[V] 2.0[A] ( ∅5 × 20[mm])

## ADDITIONAL COMPONENTS

	<p><b>Universal tray</b> For large sized eggs (Goose, Peafowl eggs etc.) - 10 eggs</p>		<p><b>Rolling divider</b> Hatching eggs to increase the stability of the whole egg.</p>
---	--	---	---

## QUALITY CERTIFICATION

