

Rcom ECO 10 PLUS

CREATION OF MOST VALUABLE LIFE BIRTH
EVOLUTION OF DIGITAL INCUBATOR

The Rcom 20 incubator is the first incubator with credibility to have a superior design and function which help in controlling optimum incubation conditions. It has two sensors, one for detecting surrounding environments and the another for internal incubator conditions.



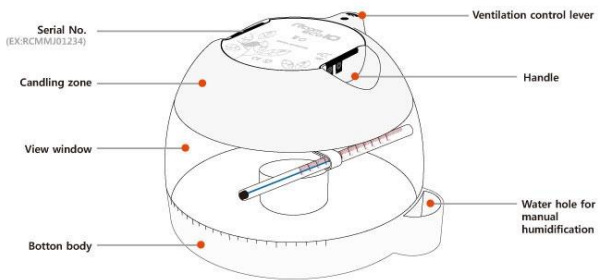
Inimitable digital innovation!

The Greatest Life Creation With Superb Technique.

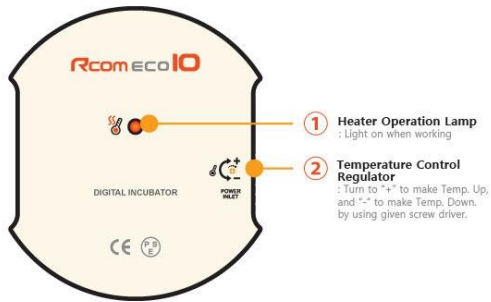




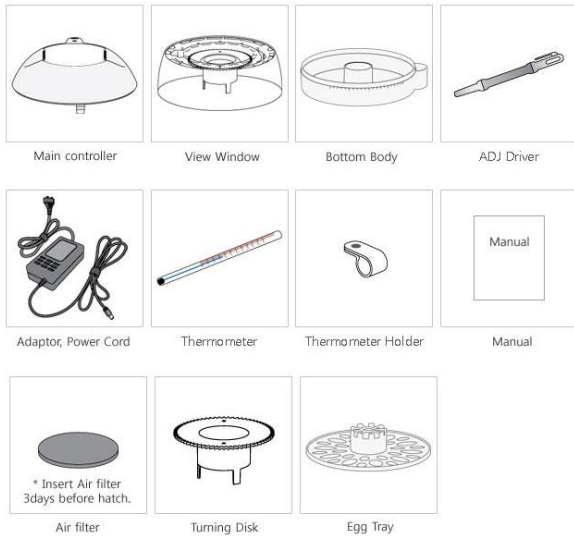
[IDENTIFICATION OF PARTS]



[FUNCTIONS OF OPERATION]



[BASIC COMPOSITION]



[OPTION]

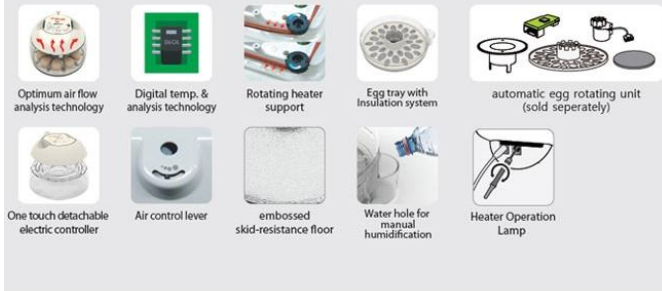


Tuning Motor



PCB

INTERIOR



[Rcom 10 series Function Comparison]

Name	ECO 10	ECO PLUS 10	PRO 10	PRO PLUS 10
Temperature (Auto control)	O	O	O	O
Humidity	Manual humidity control	Manual humidity control	Manual humidity control (APS is option.)	Auto humidity control (APS included.)
Egg turning	Manual egg turning (Automatic egg turning device is option. : motor+PCB+tray)	Manual egg turning (Automatic egg turning device is option. : motor+PCB+tray)	Auto egg turning	Auto egg turning
Display	LED	LED	LCD	LCD
Candling function	X	X	O	O
Cooling control	X	X	O	O
Air filter	O	O	O	O
Dome light	X	X	O	O
Capacity(Chick)	10 ~ 15	10 ~ 15	10	10

※ Design and Model name can be changed.

Creation of most valuable life birth

Evolution of digital incubator!!

MAIN FUNCTIONS

- > Special mechanism without egg rotation noise
- > Clean and transparent large view-window
- > Hygienic device mechanism which restrains germ reproduction with the combination of Bottom and Egg tray based on the innovative technology which minimizes bacterial propagation for non-use of any additional interior material (Turning disk, egg tray and air filter are optional for ECO 10.)
- > One-touch separation of electronic controller assembly allows convenient cleaning
- > Variable air control lever which enables the interior air volume of the device, to be altered
- > Artificial intelligence based electronics with the state-of-the-art controlling technology designed by Rcom
- > Capacity of simultaneous hatching of 10~15 standard size eggs
- > Rotational Heater Support which enables the easy adjustment of heater tension
- > Air control lever which induces the fresh exterior air minimizing the effects on the insulation
- > Manual temperature, humidity adjustment and setup functions

CONVENIENT FUNCTIONS

- > Clamped structure which prevents the leakage of water drops inside the view-window (dew condensation) out of the device
- > Egg Tray which can simultaneously store different types of eggs (Turning disk, egg tray and air filter are optional for ECO 10.)
- > One touch separation of upper part (main controller) for convenient cleaning after incubation and reparation
- > External water input hole and moisturizing device for easy supply of water for moisturizing
- > Convenient method of manual egg rotating function

※ The ECO model is for manual egg rotation method. By installing the additional automatic egg rotating unit (sold separately) the eggs are automatically rotated once every hour

*** CAUTION ***

We recommend use distilled water not forming scale in the water tank.
 If you want to use other one, please contact to purchase shop.
 After hatching, please clean it up, other wise scale can be formed in the water tank and
 it can cause failure of machine, in this case, we do not provide free of charge warranty service but charge it.



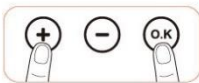
⚠ - Please wash the air filter before use, as dust in the air filter during use this may disrupt proper air circulation.

PRODUCT	ECO 10 / EX-10	PRO 10 / PX-10	PRO PLUS 10 / PX-10P
Power	DC 12V 3A		
Power Consumption	Average 21[W] MAX. 36[W]		
Temp. Limits	33~39[°C] / 91.4~102.2[°F] <small>(It can be changed according to the conditions)</small>	20 ~ 42 [°C] / 68 ~ 107.6 [°F]	
Humidity Limits	20 ~ 70 [%] <small>(It can be changed according to the conditions)</small>		
Capacity	Chick egg size 10~15[EA] Quail egg size 30~48[EA]	Chick egg size 10[EA], Quail egg size 30[EA]	
Weight	N.W. 1.3[kg], G.W 2.3[kg]	N.W. 1.5[kg], G.W 2.5[kg]	
Size of Product	(w)259 x (L)236.5 x (H) 172 [mm]		

How to Calibrate the User Temperature & Humidity (Rcom PRO 10 plus & PRO 10)

TIP! The temperature and humidity level is optimized according to the international standard at the time of shipping. Commercially available thermometer and hygrometers may have drastic measurement deviations, so it is recommended to use thermometer and hygrometer designated for this purpose.
 [Designated Thermometer and hygrometer-Rcom Digilog3]

Temperature Calibration



▶ By pressing the + and OK buttons for 3 seconds at the same time, the OPTN (option) sign appears.



▶ After selecting '1 TCAL' by using +, - buttons, push OK button for 5 seconds to enter Temp. Calibration Mode.

▶ Temp. value will blink.



▶ After setting up desired temperature by using +/- buttons push OK button to save it.

TIP!

① If pressed Candling sign () during setup, you can go back to previous step.

② If you want to raise incubator temperature 0.5°C higher, you should calibrate 0.5°C lower at temp. calibration mode.

Humidity calibration



▶ By pressing the + and OK buttons for 3 seconds at the same time, the OPTN (option) sign appears.



▶ After selecting '2 HCAL' by using +, - buttons, push OK button for 5 seconds to enter Humi. Calibration Mode.

▶ Humi. value will blink.



▶ After setting up desired humidity by using +/- buttons push OK button to save it.

TIP!

① If pressed Candling sign () during setup, you can go back to previous step.

② If you want to raise incubator temperature 0.5°C higher, you should calibrate 0.5°C lower at temp. calibration mode.

If you use this function wrong, initialize the incubator to factory setting.